

1120 Series

SAFETY PATTERN GAUGE

A Heavy Duty all stainless steel pressure gauge especially designed for applications requiring Safety Pattern Configuration.

Case

AISI 304 Stainless steel with solid front between bourdon tube & dial with blow out back

Bezel

AISI 304 Stainless steel

Window

Laminated Safety Glass

Dial

Aluminium

Pointer

Aluminium with black finish

Bourdon Tube

316 Stainless steel (fully welded joints)

Movement

Stainless steel

Socket (connection)

AISI 316 Stainless steel

Accuracy

63mm dial size: +/- 1.6% of gauge span

100 & 150mm dial size: +/- 1.0% of gauge span

Dial Sizes (mm)

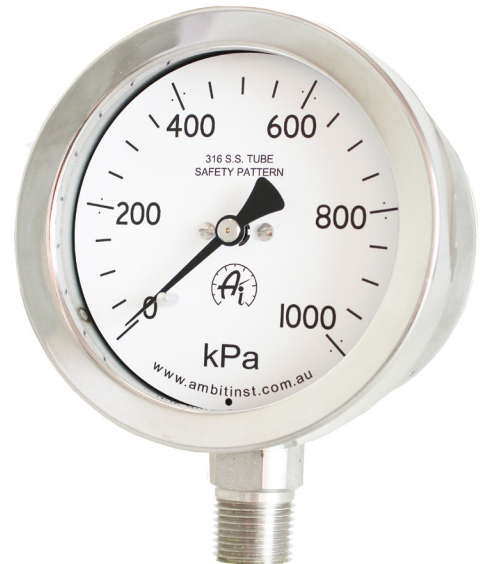
63, 100, 150.

Overrange

130%. Higher on request. (Range Dependant)

Temperature range

From -20 to 60°C



MODEL 1122

ORDERING CODES FOR STANDARD CONFIGURATIONS

1122 - 100 - 72 - 6P - G (Example Only)

Model/Mounting:

Surface back flange	1121
Direct bottom connection	1122
Panel via front flange	1123
Direct lower rear connection	1125

Dial Size in mm:

063
100
150

Range:

See range codes below

Options:

G	Glycerine
M	Modified

Connections & Dial Size:

1/8" Connection, 63mm Dial
2N = NPT, 2P = BSPP, 2T = BSPT

1/4" Connection, 63, 100, 150mm Dial
4N = NPT, 4P = BSPP, 4T = BSPT

3/8" Connection, 100, 150mm Dial
6N = NPT, 6P = BSPP, 6T = BSPT

1/2" Connection, 100, 150mm Dial
8N = NPT, 8P = BSPP, 8T = BSPT

STANDARD kPa SCALE RANGES and ORDERING CODES

Range	Order Code	Range	Order Code	Range	Order Code
-100/0/60	42	0 - 160	70	0 - 6000	80
-100/0/150	43	0 - 250	72	0 - 8000	91
-100/0/300	44	0 - 400	73	0 - 10,000	81
-100/0/500	45	0 - 600	74	0 - 16,000	82
-100/0/900	46	0 - 800	98	0 - 25,000	84
-100/0/1500	47	0 - 1000	75	0 - 40,000	86
-100/0	16	0 - 1600	76	0 - 60,000	87
0 - 60	67	0 - 2500	78	0 - 70,000	89
0 - 100	69	0 - 4000	79	0 - 100,000	88

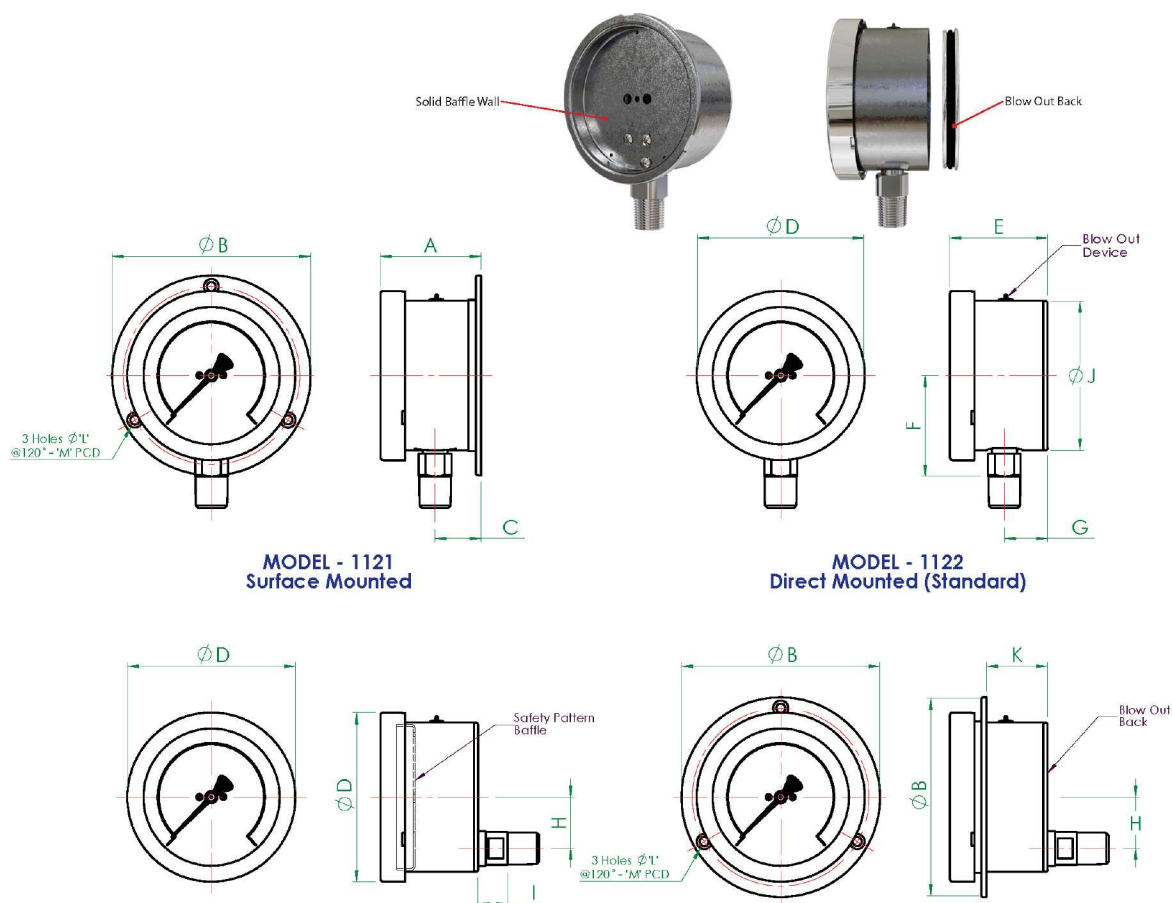
NON-STANDARD SCALES AND OTHER UNIT DESIGNATIONS ARE AVAILABLE ON REQUEST

COMMON AVAILABLE OPTIONS

Window
Movement
Special Scales
Restrictors
Pointers
Case/Bezel
Auxillary pointer
Accuracy
Certification

Perspex, Polycarbonate
 "Vibragauge" (vibration, pulsation resistant)
 psi, bar, kg/cm², Tons etc. Dual scale, Fineline, colour sectors/ lines, refrigerant
 0.4 and 0.9mm bore
 Adjustable
 316 Stainless steel
 Maximum, Minimum or both
 0.5% for 100/150mm, 1% for 63mm
 N.A.T.A. or Ambit In-House

DIMENSIONS



Surface mounted gauges should be fitted with distance pieces of not less than 3/4" (20mm) long to allow them to be mounted away from wall or panel.

MODEL - 1125
 Direct Mounted (Back Connect)

MODEL - 1123
 Flush Mounted - Screw Fixing

General Arrangement Dimensions in mm, tol' ± 1mm														
DIM ø mm	A	B	C	D	E	F	G	H	I	J	K	L	M	CUT OUT
63 (2½")	42.4	85.2	20	68.4	42.6	41.8	20.4	18	13.6	62	24.6	3.8	75	67.5
100 (4")	67.2	132.5	30.7	112.2	65.2	66.9	28.7	34	19.8	99	40.7	6	118	106
150 (6")	67.7	186	31.2	161.7	65.7	92.1	28.7	34	19.8	148	37.7	5.8	168	153

WARNING:

*Do not use glycerine filled gauges in any service which may include strong oxidising agents including (but not limited to) Chlorine, Nitric Acid, Hydrogen Peroxide.
 Such combinations can result in an explosion.

Note: Not all pressure gauges are suitable for every application. Special gauges are required for any gas or air over 2500 kPa, and for Oxygen or Acetylene at any pressure.
 For acids, slurries and other substances, specific materials or diaphragm seals may be needed
 Please specify the application to ensure the correct gauge is offered.

Sales of ALL products are subject to our General Conditions of Quotation & Supply.
 Technical specifications are subject to change without prior notice.

AMBIT
INSTRUMENTS PTY LTD
 ABN 50 005 613 641

Office & Factory | 42 Titan Drive, Carrum Downs, Victoria, 3201, Australia
 Ph: 03 9776 8888 | E: contact@ambitinst.com.au | W: ambitinst.com.au