

Models-1071/S, 1072/S, 1073/S, 1074/S Stainless Steel Case & Stainless Steel Internals

Case

AISI 304 Stainless Steel
Bezel Stainless Steel (Bayonet type).
Weatherproof Construction

Socket + Element

AISI 316 Stainless Steel

Thread

1/8", 1/4", 3/8", 1/2" NPT, BSP, BSPT

Movement

Stainless Steel

Dial

White Aluminium (Black Printing)
Fine scale markings
Anti parallax mirror band

Pointer

Black Aluminium (Knife edge)

Window

Sheet Glass

Standard Size

150, 250mm

Accuracy class

0.25% or 0.5% of Full scale
Over 1600 bar on rising pressure only.

Scale Range

150, 250mm Vacuum to 2,000 bar
Calibration certificate is issued for each gauge
showing increasing and decreasing readings
against Dead - Weight Testers

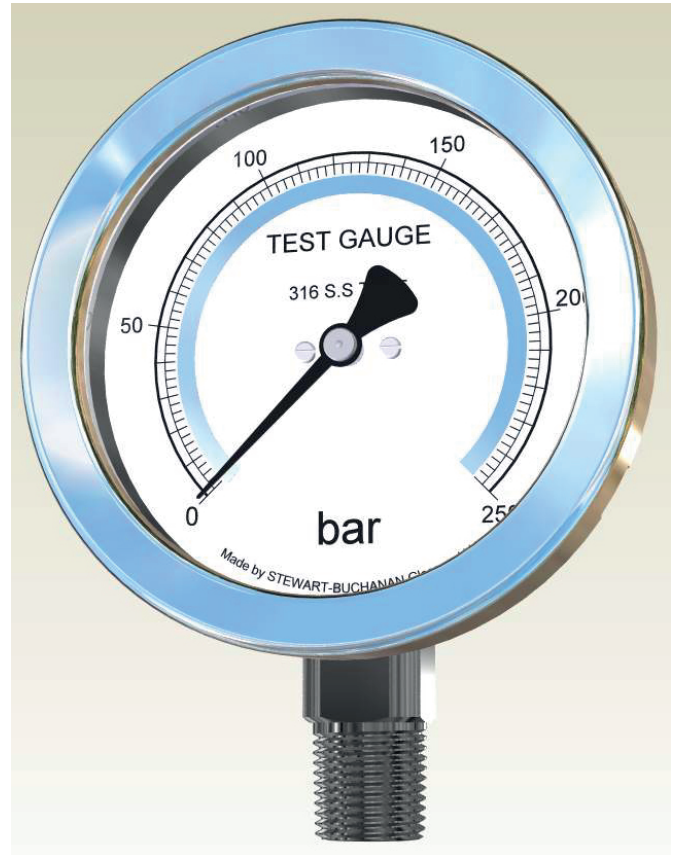
Ordering information

State:- Pressure gauge model
/ Nominal size / Scale range
/ Size and location of connection
/ Optional extras reqd.

Optional extras

AISI 316 Stainless steel case.
Other pressure connections (including high pressure).
Monel to Nace MR-01-75 wetted parts.
Laminated safety glass / Perspex window.

Can be supplied in the Safety Pattern type.



Model - 1072/S

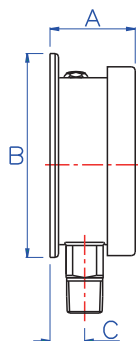
We manufacture a wide range of instruments to customer's special requirements
We shall be pleased to discuss and advise on your specifications.

Specifications and dimensions given in this leaflet represent the state of engineering at the time of printing.
Engineering modifications may take place without prior notice.

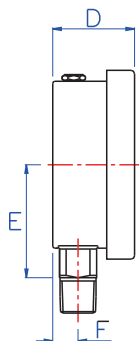
STEWART-BUCHANAN GAUGES LTD
Sales Office & Manufacturing Facility.
Burnside Industrial Estate, Kilsyth, Glasgow, G65 9JX, SCOTLAND
Tel:- +44 (0)1236 821533
Fax:- +44 (0)1236 824090
E-Mail:- sales@stewarts-group.com
Web Site:- www.stewarts-group.com

Models-1071/S, 1072/S, 1073/S, 1074/S Stainless Steel Case & Stainless Steel Internals

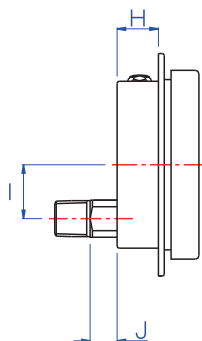
Surface Mounted
Model - 1071/S



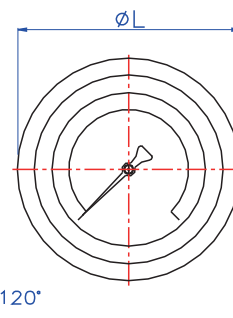
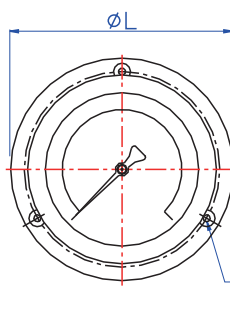
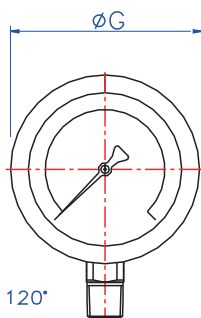
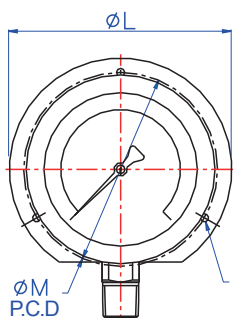
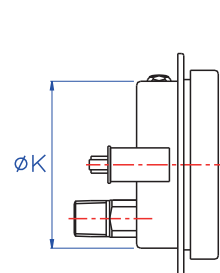
Direct Mounted
(Standard)
Model - 1072/S



Flush Mounted
Screw Fixing
Model - 1073/S



Flush Mounted
Clamp Fixing
Model - 1074/S



Dimensions Diameter	A	B	C	D	E	F	G	H	I	J	K	L	M	N	O	Panel Cut-out
150	50.5	174	17	48.5	93	15	162	24.5	32	18	148	185	168	5	5.8	153
250	51.5	*294	19	51.5	148	19	252	43.5	52	16	248	302	273	6.5	6.35	270

* Mounting lugs are used instead of surface flange.