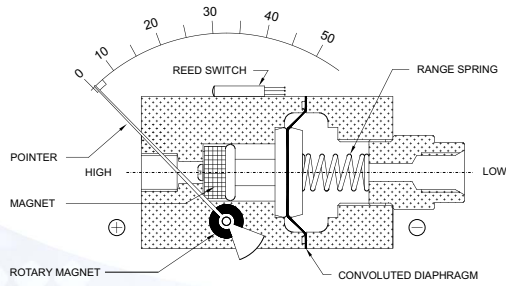


SMALL CONVOLUTED DIAPHRAGM



COMBINATIONS

Gauge



Gauge + switch (with a DIN plug)



MOUNTING BRACKETS

Gauge



Gauge + switch (with a DIN plug)



LX 300 DGC

DP Range : 0 to 0.075 upto 4 bar
0 to 1 upto 60 psi

Specifications

Accuracy	±2% of the FSD (Ascending)
Migration	No migration ; Zero leakage from high to low port
Range	0-0.075 to 0-4 bar or equivalent ranges in other units
First marking on the scale	15% of the FSD
Sensing element	Diaphragm
Wetted parts	Diaphragm, body material, SS 302 spring & ceramic magnet
Case material	Engineering polymer
Dial size in inch	2.5" (square), 4.5" (round)
Mounting	Direct, front flange, 2" pipe & surface mounting
Maximum working pressure	100 bar / 1500 psi
Maximum process temperature	80°C / 175°F
Body material	Aluminum, Brass, SS 316 & Monel
Seals	Buna-N, Viton, EPDM diaphragm & 'O' rings
Window	Acrylic
Connection	1/4" NPT(F) Std. Optional 1/4" BSP(F) with adaptor
Porting	In-line, rear, bottom, bottom & vent, in-line & vent, in-line & bottom.
Over range protection	Up to the max. working pressure from high side
Protection for gauge & switch	IP 65 / NEMA-4

Options

Switches (Adjustable in 30-100% of FSD)

Liquid filling	1 or 2 SPSTs with a DIN plug
Red follower pointer (except 6")	1 or 2 SPSTs with a terminal strip
Customer logo	1 SPST with a built in relay
Dual scale	1 or 2 SPDts with a terminal strip
Colour band	1 or 2 SPDts with a DIN plug
Filter mesh in (+) connection	
Descending calibration	

Instrument can be calibrated with square root scale for flow measurement.

