

600 Series

Stainless Steel Pressure Gauge

The Stainless Steel Heavy Duty liquid fillable pressure gauge for the oil, chemical, food and beverage industries.

Case

AISI 304 Stainless steel weatherproof construction

Bezel

AISI 304 Stainless steel

Window

Sheet glass

Dial

Aluminium

Pointer

Aluminium with black finish

Socket & Element

AISI 316 Stainless steel (fully welded joints)

Movement

Stainless steel

Accuracy

63mm 1.6% F.S., 100 & 150mm 1% F.S.

Dial Sizes (mm)

63, 100, 150 (Also 250 by request)

Temperature Range

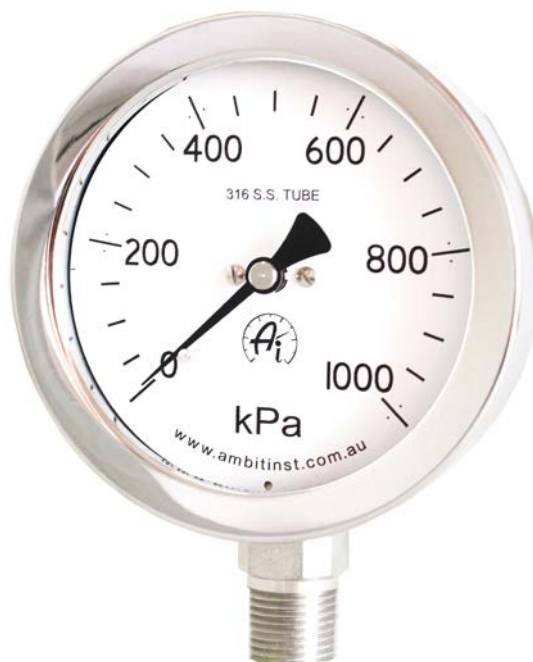
From -20 to +60 Degrees Celsius

Overrange

130% (Higher on request & range dependent)

IP Rating

Up to IP67



Model 632

ORDERING CODES FOR STANDARD CONFIGURATIONS

632 - 100 - 72 - 4P - M (Example Only)

Model/Mounting:

Surface back flange	631
Direct bottom connection	632
Panel via front flange	633
Panel via clamp fixing	634
Direct lower rear connection	635

Dial Size in mm:

063
100
150

Range:

See range codes below 72

Options:

G	Glycerine
M	Modified

Connections & Dial size:

2N	1/8"NPT	63mm
2P	1/8"BSPP	63mm
2T	1/8"BSPT	63mm
4N	1/4"NPT	63, 100, 150mm
4P	1/4"BSPP	63, 100, 150mm
4T	1/4"BSPT	63, 100, 150mm
6N	3/8"NPT	100, 150mm
6P	3/8"BSPP	100, 150mm
6T	3/8"BSPT	100, 150mm
8N	1/2"NPT	100, 150mm
8P	1/2"BSPP	100, 150mm
8T	1/2"BSPT	100, 150mm

STANDARD kPa SCALE RANGES and ORDERING CODES

Range	Order Code	Range	Order Code	Range	Order Code
-100/0/60	42	0 - 160	70	0 - 6000	80
-100/0/150	43	0 - 250	72	0 - 8000	91
-100/0/300	44	0 - 400	73	0 - 10,000	81
-100/0/500	45	0 - 600	74	0 - 16,000	82
-100/0/900	46	0 - 800	98	0 - 25,000	84
-100/0/1500	47	0 - 1000	75	0 - 40,000	86
-100/0	16	0 - 1600	76	0 - 60,000	87
0 - 60	67	0 - 2500	78	0 - 70,000	89
0 - 100	69	0 - 4000	79	0 - 100,000	88

NON-STANDARD SCALES AND OTHER UNIT DESIGNATIONS ARE AVAILABLE ON REQUEST

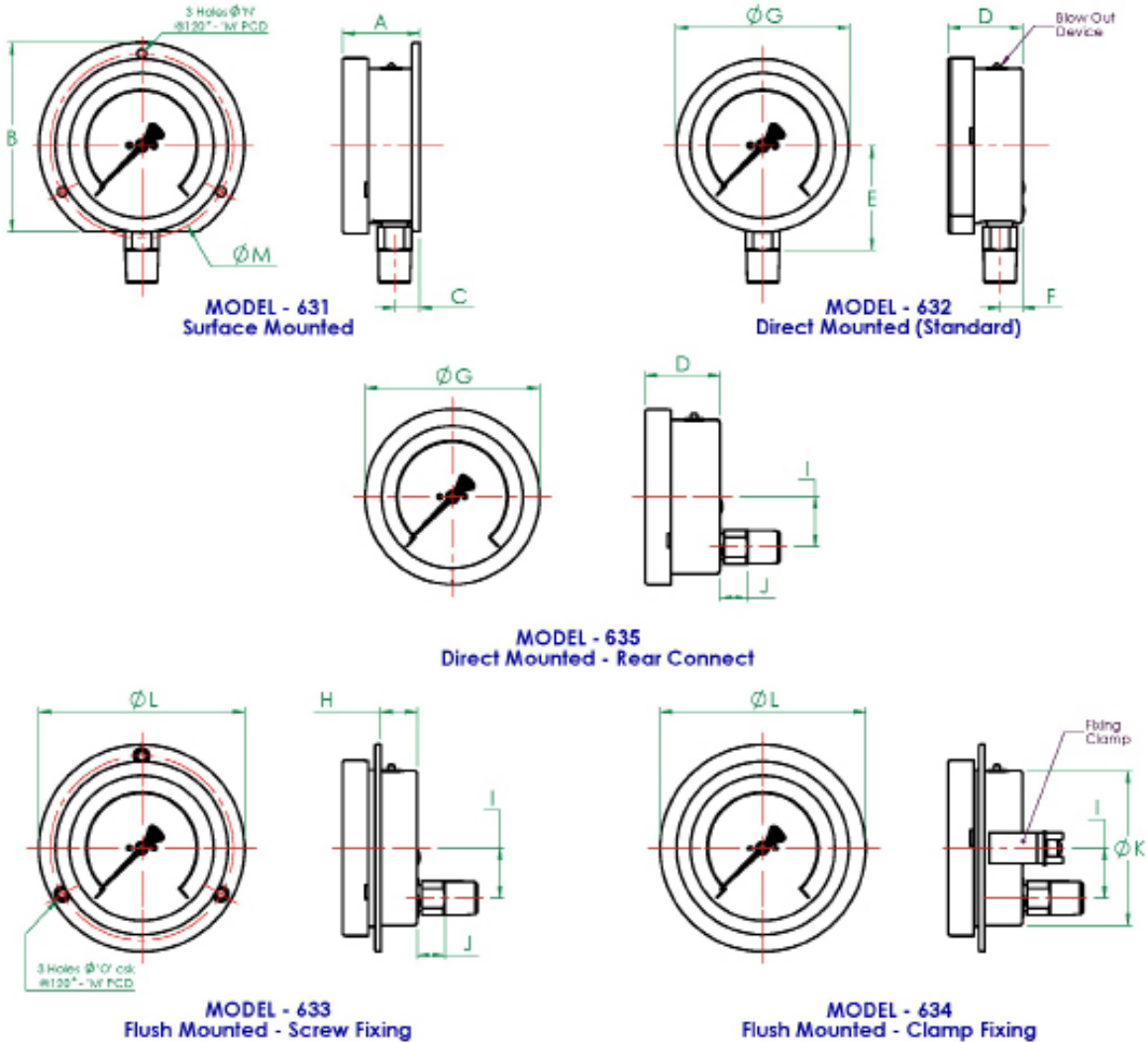
WARNING: Do not use glycerine filled gauges in any service which may include strong oxidising agents including (but not limited to) Chlorine, Nitric Acid, Hydrogen Peroxide. Such combinations can result in an explosion

COMMON AVAILABLE OPTIONS

Window
Movement
Special Scales
Restrictors
Pointers
Case/Bezel
Auxillary pointer
Accuracy
Dial
Certification
Switches

Laminated Safety Glass, Perspex, Polycarbonate
 "Vibragaug" (vibration, pulsation resistant)
 psi, bar, kg/cm², Tons etc. Dual scale, Fineline, colour sectors/ lines, refrigerant
 0.4 and 0.9mm bore
 Adjustable, knife edge
 316 Stainless steel
 Maximum, minimum or both
 0.5% for 100/150mm, 1% for 63mm
 Mirror backed
 N.A.T.A. or Ambit In-House
 Modules Single or Double

STANDARD DIMENSIONS



General Arrangement Dimensions in mm, tol' ± 1mm																
DIM ø mm	A	B	C	D	E	F	G	H	I	J	K	L	M	N	O	CUT OUT
63 (2½")	34.5	78.5	12.5	31.5	41.8	9.5	68.4	21.5	18	13	62	85.2	75	3.5	3.8	66
100 (4")	50.7	121	16.2	49	66.9	14.5	112.2	24.5	32	18	99	132.5	118	6	6	106
150 (6")	52.7	174	18.4	49.5	92.1	15.2	161.7	24	32	17.8	148	186	168	5.8	5.8	153

Sales of ALL products are subject to our General Conditions of Quotation & Supply.
 Technical specifications are subject to change without prior notice.

AMBIT
INSTRUMENTS PTY LTD
 ABN 50 005 613 641

Office & Factory | 42 Titan Drive, Carrum Downs, Victoria, 3201, Australia
 Ph: 03 9776 8888 | E: contact@ambitinst.com.au | W: ambitinst.com.au