

500 Series

Stainless Steel / Brass Pressure Gauge

A Heavy Duty general purpose liquid fillable pressure gauge for process mediums compatible with non-ferrous (Brass/Bronze) wetted parts.

Case

AISI 304 Stainless steel weatherproof construction

Bezel

AISI 304 Stainless steel

Window

Sheet glass

Dial

Aluminium

Pointer

Aluminium with black finish

Socket & Element

Phosphor bronze to 10,000kPa, Stainless steel above 10,000kPa

Movement

Brass

Accuracy

F.S., 63mm, 100 & 150mm 1% F.S.

Dial Sizes (mm)

63, 100, 150 (Also 250 by request)

Temperature Range

From -20 to +60 Degrees Celcius

Overrange

130% higher on request

IP Rating

Up to IP66



MODEL 522

ORDERING CODES FOR STANDARD CONFIGURATIONS

522 - 100 - 72 - 6P - G (Example only)

Model/Mounting:

Surface back flange	521
Direct bottom connection	522
Panel via front flange	523
Panel via clamp fixing	524
Direct lower rear connection	525

Dial Size in mm:

063
100
150

Range:

See range codes below

72

Options:

G	Glycerine *
M	Modified

Connections & Dial size:

2N	1/8"NPT	63mm
2P	1/8"BSPP	63mm
2T	1/8"BSPT	63mm
4N	1/4"NPT	63, 100, 150mm
4P	1/4"BSPP	63, 100, 150mm
4T	1/4"BSPT	63, 100, 150mm
6N	3/8"NPT	100, 150mm
6P	3/8"BSPP	100, 150mm
6T	3/8"BSPT	100, 150mm
8N	1/2"NPT	100, 150mm
8P	1/2"BSPP	100, 150mm
8T	1/2"BSPT	100, 150mm

STANDARD kPa SCALE RANGES and ORDERING CODES

Range	Order Code	Range	Order Code	Range	Order Code
-100/0/60	42	0 - 160	70	0 - 6000	80
-100/0/150	43	0 - 250	72	0 - 10,000	81
-100/0/300	44	0 - 400	73	0 - 16,000	82
-100/0/500	45	0 - 600	74	0 - 25,000	84
-100/0/900	46	0 - 800	98	0 - 40,000	86
-100/0/1500	47	0 - 1000	75	0 - 60,000	87
-100/0	16	0 - 1600	76	0 - 70,000	89
0 - 60	67	0 - 2500	78		
0 - 100	69	0 - 4000	79		

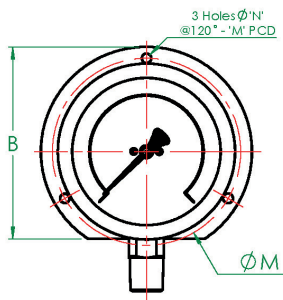
NON-STANDARD SCALES AND OTHER UNIT DESIGNATIONS ARE AVAILABLE ON REQUEST

COMMON AVAILABLE OPTIONS

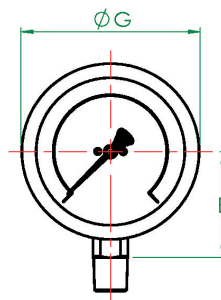
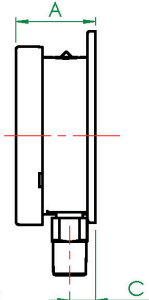
Window
Movement
Special Scales
Restrictors
Pointers
Case/Bezel
Auxiliary pointer
Accuracy
Dial
Certification

Laminated Safety Glass, Perspex, Polycarbonate
"Vibragauge" (vibration, pulsation resistant)
psi, bar, kg/cm², Tons etc. Dual scale, Fineline, colour sectors/ lines, refrigerant
0.4 and 0.9mm bore
Adjustable, Knife Edge
316 Stainless steel
Maximum, Minimum or both
0.5% for 100/150mm, 1% for 63mm
Mirror backed
N.A.T.A. or Ambit In-House

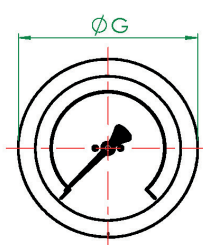
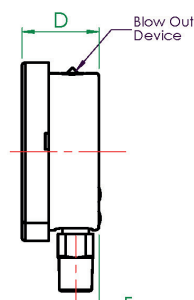
STANDARD DIMENSIONS



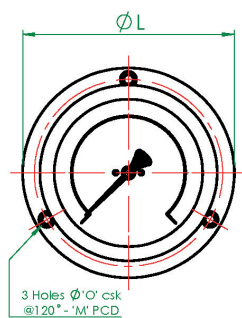
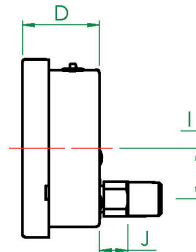
MODEL - 521
Surface Mounted



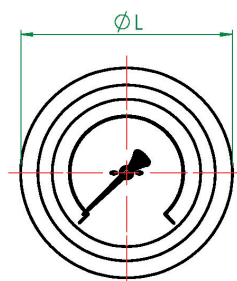
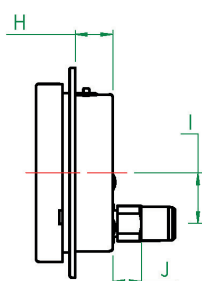
MODEL - 522
Direct Mounted (Standard)



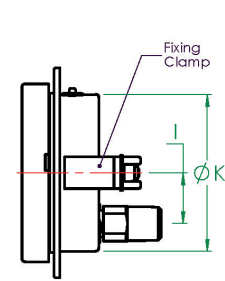
MODEL - 525
Direct Mounted - Rear Connect



MODEL - 523
Flush Mounted - Screw Fixing



MODEL - 524
Flush Mounted - Clamp Fixing



General Arrangement Dimensions in mm, tol' ± 1mm																
ø mm DIM	A	B	C	D	E	F	G	H	I	J	K	L	M	N	O	CUT OUT
63 (2½")	34.5	78.5	12.5	31.5	41.8	9.5	68.4	21.5	18	13	62	85.2	75	3.5	3.8	66
100 (4")	50.7	121	16.2	49	66.9	14.5	112.2	24.5	32	18	99	132.5	118	6	6	106
150 (6")	52.7	174	18.4	49.5	92.1	15.2	161.7	24	32	17.8	148	186	168	5.8	5.8	153

WARNING:

*Do not use glycerine filled gauges in any service which may include strong oxidising agents including (but not limited to) Chlorine, Nitric Acid, Hydrogen Peroxide. Such combinations can result in an explosion.

Note: Not all pressure gauges are suitable for every application. Special gauges are required for any gas or air over 2500 kPa, and for Oxygen or Acetylene at any pressure. For acids, slurries and other substances, specific materials or diaphragm seals may be needed. Please specify the application to ensure the correct gauge is offered.

Sales of ALL products are subject to our General Conditions of Quotation & Supply.
Technical specifications are subject to change without prior notice.