

# 40mm Series

## Stainless / Brass Pressure Gauges

40mm glycerine fillable pressure gauge with stainless steel case.  
General purpose gauge to suit many applications throughout a broad range of industries.

**FULLY COMPLIES WITH THE ACCURACY REQUIREMENTS OF A.S. 1349**

### Case & Bezel

AISI 304 Stainless steel, glycerine fillable

### Mounting

Direct Rear Model 525  
Panel via Clamp Model 524

### Window

Plexiglass

### Dial

Aluminium, white, dual scale, kPa outer in black, psi inner in red

### Pointer

Aluminium with black finish

### Bourdon Tube

Phosphor Bronze

### Movement

Brass

### Socket (connection)

Brass: 1/8" BSPT & 1/8"NPT

### Accuracy

+/-3% F.S. Complies with AS1349-1986

### Dial Size

40mm

### Restrictor

Included



Model 525

## STANDARD kPa SCALE RANGES and ORDERING CODES

### Model/Mounting:

Direct Rear Entry 525  
Panel via rear clamp 524

### Dial Size in mm:

040

525 - 040 - 75 - 2T - G

### Liquid Filled Case

G GLYCERINE \*

### Connection

2T 1/8"BSPT  
2N 1/8"NPT

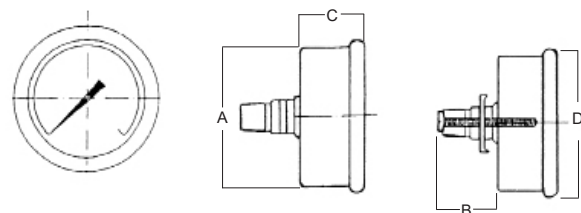
### Range:

75 Example only  
Stocked Range Codes refer Table

**\*WARNING:** Do not use glycerine filled gauges in any service which may include strong oxidising agents including (but not limited to) Chlorine, Nitric Acid, Hydrogen Peroxide. Such combinations can result in an explosion

## DIMENSIONS mm

| Range<br>kPa (psi) | Order Code |
|--------------------|------------|
| 0 - 100 (0-14)     | 69         |
| 0 - 250 (0-36)     | 72         |
| 0 - 400 (0-58)     | 73         |
| 0 - 1000 (0-140)   | 75         |



| A  | B  | C  | D    |
|----|----|----|------|
| 41 | 19 | 25 | 46.5 |

Sales of ALL products are subject to our General Conditions of Quotation & Supply.  
Technical specifications are subject to change without prior notice.

**AMBIT**  
**INSTRUMENTS PTY LTD**  
ABN 50 005 613 641

Office & Factory | 42 Titan Drive, Carrum Downs, Victoria, 3201, Australia  
Ph: 03 9776 8888 | E: contact@ambitinst.com.au | W: ambitinst.com.au