

# 1120 Series

## SAFETY PATTERN GAUGE

**A Heavy Duty all stainless steel pressure gauge especially designed for applications requiring Safety Pattern Configuration.**

### Case

AISI 304 Stainless steel with solid front between bourdon tube & dial with blow out back

### Bezel

AISI 304 Stainless steel

### Window

Laminated Safety Glass

### Dial

Aluminium

### Pointer

Aluminium with black finish

### Bourdon Tube

316 Stainless steel (fully welded joints)

### Movement

Stainless steel

### Socket (connection)

AISI 316 Stainless steel

### Accuracy

63mm dial size: +/- 1.6% of gauge span

100 & 150mm dial size: +/- 1.0% of gauge span

### Dial Sizes (mm)

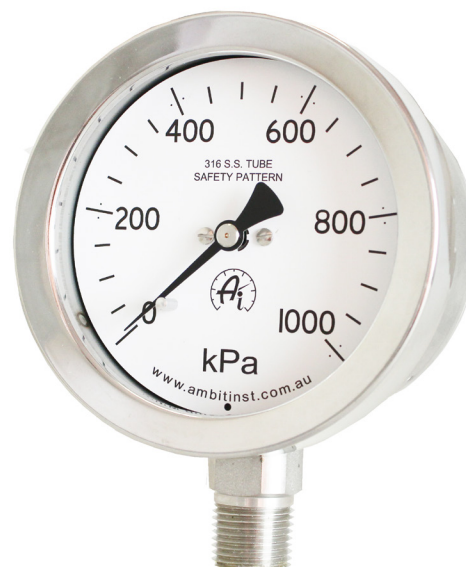
63, 100, 150.

### Overrange

130%. Higher on request. (Range Dependant)

### Temperature range

From -20 to 60°C



**MODEL 1122**

### ORDERING CODES FOR STANDARD CONFIGURATIONS

**1122 - 100 - 72 - 6P - G (Example Only)**

#### Model/Mounting:

Surface back flange	1121
Direct bottom connection	1122
Panel via front flange	1123
Direct lower rear connection	1125

#### Dial Size in mm:

063  
100  
150

#### Range:

See range codes below

#### Options:

G	Glycerine
M	Modified

#### Connections & Dial Size:

1/8" Connection, 63mm Dial  
2N = NPT, 2P = BSPP, 2T = BSPT

1/4" Connection, 63, 100, 150mm Dial  
4N = NPT, 4P = BSPP, 4T = BSPT

3/8" Connection, 100, 150mm Dial  
6N = NPT, 6P = BSPP, 6T = BSPT

1/2" Connection, 100, 150mm Dial  
8N = NPT, 8P = BSPP, 8T = BSPT

### STANDARD kPa SCALE RANGES and ORDERING CODES

Range	Order Code	Range	Order Code	Range	Order Code
-100/0/60	42	0 - 160	70	0 - 6000	80
-100/0/150	43	0 - 250	72	0 - 8000	89
-100/0/300	44	0 - 400	73	0 - 10,000	81
-100/0/500	45	0 - 600	74	0 - 16,000	82
-100/0/900	46	0 - 800	98	0 - 25,000	84
-100/0/1500	47	0 - 1000	75	0 - 40,000	86
-100/0	16	0 - 1600	76	0 - 60,000	87
0 - 60	67	0 - 2500	78	0 - 70,000	89
0 - 100	69	0 - 4000	79	0 - 100,000	88

NON-STANDARD SCALES AND OTHER UNIT DESIGNATIONS ARE AVAILABLE ON REQUEST

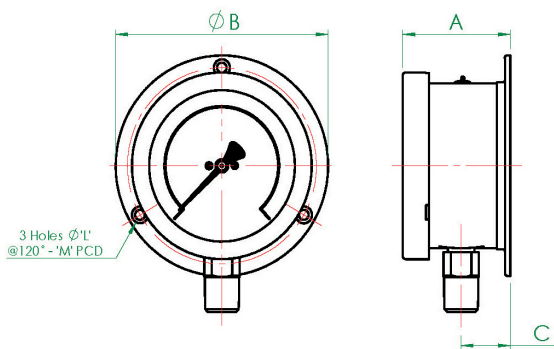
**WARNING:** Do not use glycerine filled gauges in any service which may include strong oxidising agents including (but not limited to) Chlorine, Nitric Acid, Hydrogen Peroxide. Such combinations can result in an explosion

## COMMON AVAILABLE OPTIONS

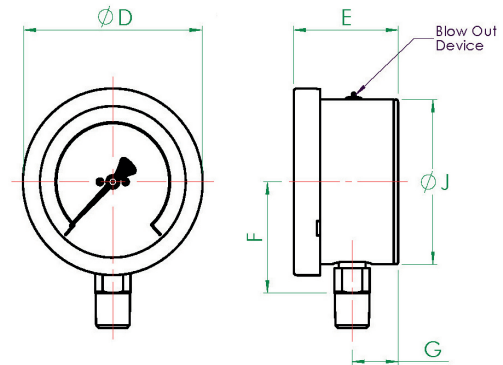
Window  
Movement  
Special Scales  
Restrictors  
Pointers  
Case/Bezel  
Auxillary pointer  
Accuracy  
Certification

Perspex, Polycarbonate  
"Vibragauge" (vibration, pulsation resistant)  
psi, bar, kg/cm<sup>2</sup>, Tons etc. Dual scale, Fineline, colour sectors/ lines, refrigerant  
0.4 and 0.9mm bore  
Adjustable  
316 Stainless steel  
Maximum, Minimum or both  
0.5% for 100/150mm, 1% for 63mm  
N.A.T.A. or Ambit In-House

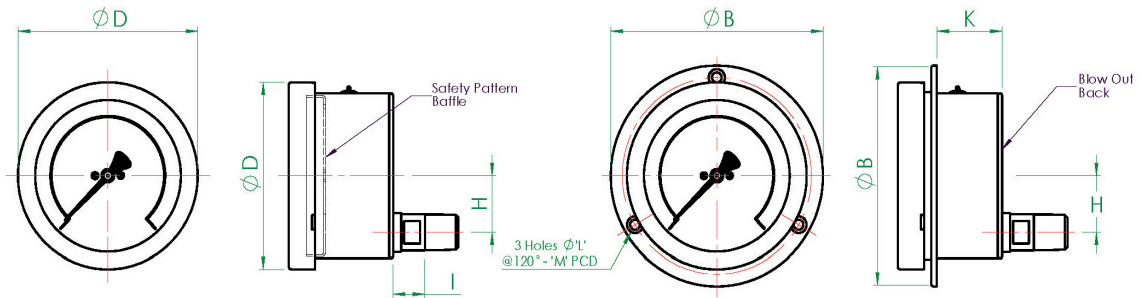
## DIMENSIONS



**MODEL - 1121**  
Surface Mounted



**MODEL - 1122**  
Direct Mounted (Standard)



Surface mounted gauges should be fitted with distance pieces of not less than 3/4" (20mm) long to allow them to be mounted away from wall or panel.

**MODEL - 1125**  
Direct Mounted (Back Connect)

**MODEL - 1123**  
Flush Mounted - Screw Fixing

General Arrangement Dimensions in mm, tol' $\pm 1$ mm														
DIM ø mm	A	B	C	D	E	F	G	H	I	J	K	L	M	CUT OUT
63 (2½")	42.4	85.2	20	68.4	42.6	41.8	20.4	18	13.6	62	24.6	3.8	75	66
100 (4")	67.2	132.5	30.7	112.2	65.2	66.9	28.7	34	19.8	99	40.7	6	118	106
150 (6")	67.7	186	31.2	161.7	65.7	92.1	28.7	34	19.8	148	37.7	5.8	168	153

Sales of ALL products are subject to our General Conditions of Quotation & Supply.  
Technical specifications are subject to change without prior notice.

**AMBIT**  
**INSTRUMENTS PTY LTD**  
ABN 50 005 613 641

Office & Factory | 42 Titan Drive, Carrum Downs, Victoria, 3201, Australia  
Ph: 03 9776 8888 | E: [contact@ambitinst.com.au](mailto:contact@ambitinst.com.au) | W: [ambitinst.com.au](http://ambitinst.com.au)