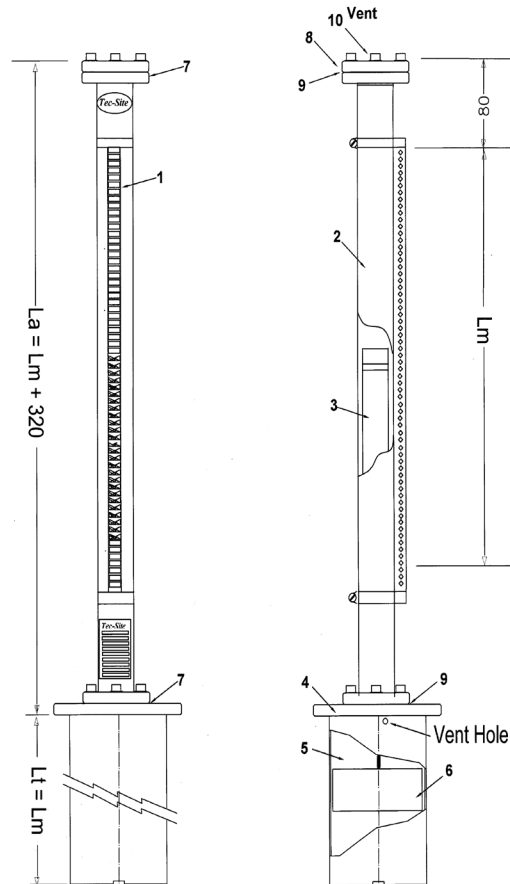


## Magnetic Rotor Level Indicator

For "Top of Tank" Mounting



Lt = Length in Tank  
La = Length above tank

1. Indication Rail : Polycarbonate/Aluminium, colours red/white (standard)
2. Float Follower Tube : 316L StSt, 38mm O.D. x 1.6mm wall
3. Float Follower : Polypropylene
4. Process Connection : 316SS, 100mm ANSI 150#RF
5. Float Tube : 316L St St
6. Float : 316L St St, densities from 0.8 kg/m<sup>3</sup>
7. Follower tube flanges : 316L St St
8. End Flange : 316L St St, tapped 1/2"NPT
9. Gaskets : Buna N
10. Vent : 316SS, 1/2"NPT (plugged)

Non indicated portion : SG 0.8 : 135mm, SG 1.0 : 110mm, SG 1.2 : 85mm

Pressure Rating : 1000 kPa, hydro tested (cert included) to 1250 kPa.

Temperature rating : 100 Deg C

Sales of ALL products are subject to our General Conditions of Quotation & Supply.  
Technical specifications are subject to change without prior notice.



ACN No 50 005 613 641

42 TITAN DRIVE CARRUM DOWNS 3201 VICTORIA AUSTRALIA.

Phone: 03.9776.8888 Fax: 03 9776.8656

Email: [contact@ambitinst.com.au](mailto:contact@ambitinst.com.au)

[www.ambitinst.com.au](http://www.ambitinst.com.au)



WORLD RECOGNISED  
ACCREDITATION

LAB No 3103