

1120 Series

SAFETY PATTERN GAUGE

A Heavy Duty all stainless steel pressure gauge especially designed for applications requiring Safety Pattern Configuration.

Case

AISI 304 Stainless steel with solid front between bourdon tube & dial with blow out back

Bezel

AISI 304 Stainless steel

Window

Laminated Safety Glass

Dial

Aluminium

Pointer

Aluminium with black finish

Bourdon Tube

316 Stainless steel (fully welded joints)

Movement

Stainless steel

Socket (connection)

AISI 316 Stainless steel

Accuracy

63mm dial size: +/- 1.6% of gauge span

100 & 150mm dial size: +/- 1.0% of gauge span

Dial Sizes (mm)

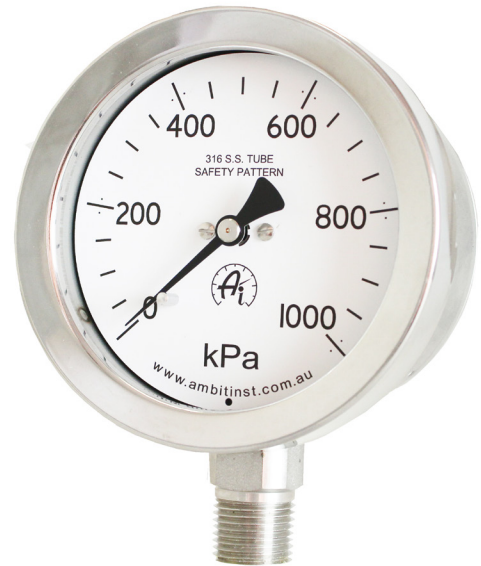
63, 100, 150.

Overrange

130%. Higher on request. (Range Dependant)

Temperature range

From -20 to 60°C



MODEL 1122

ORDERING CODES FOR STANDARD CONFIGURATIONS

1122 - 100 - 72 - 6P - G (Example Only)

Model/Mounting:

Surface back flange 1121
 Direct bottom connection 1122
 Panel via front flange 1123
 Direct lower rear connection 1125

Dial Size in mm:

063
 100
 150

Range:

See range codes below

Options:

G Glycerine
 M Modified

Connections & Dial Size:

1/8" Connection, 63mm Dial
 2N = NPT, 2P = BSPP, 2T = BSPT

1/4" Connection, 63, 100, 150mm Dial
 4N = NPT, 4P = BSPP, 4T = BSPT

3/8" Connection, 100, 150mm Dial
 6N = NPT, 6P = BSPP, 6T = BSPT

1/2" Connection, 100, 150mm Dial
 8N = NPT, 8P = BSPP, 8T = BSPT

STANDARD kPa SCALE RANGES and ORDERING CODES

Range	Order Code	Range	Order Code	Range	Order Code
-100/0/60	42	0 - 160	70	0 - 6000	80
-100/0/150	43	0 - 250	72	0 - 8000	89
-100/0/300	44	0 - 400	73	0 - 10,000	81
-100/0/500	45	0 - 600	74	0 - 16,000	82
-100/0/900	46	0 - 800	98	0 - 25,000	84
-100/0/1500	47	0 - 1000	75	0 - 40,000	86
-100/0	16	0 - 1600	76	0 - 60,000	87
0 - 60	67	0 - 2500	78	0 - 70,000	89
0 - 100	69	0 - 4000	79	0 - 100,000	88

NON-STANDARD SCALES AND OTHER UNIT DESIGNATIONS ARE AVAILABLE ON REQUEST

WARNING: Do not use glycerine filled gauges in any service which may include strong oxidising agents including (but not limited to) Chlorine, Nitric Acid, Hydrogen Peroxide. Such combinations can result in an explosion

COMMON AVAILABLE OPTIONS

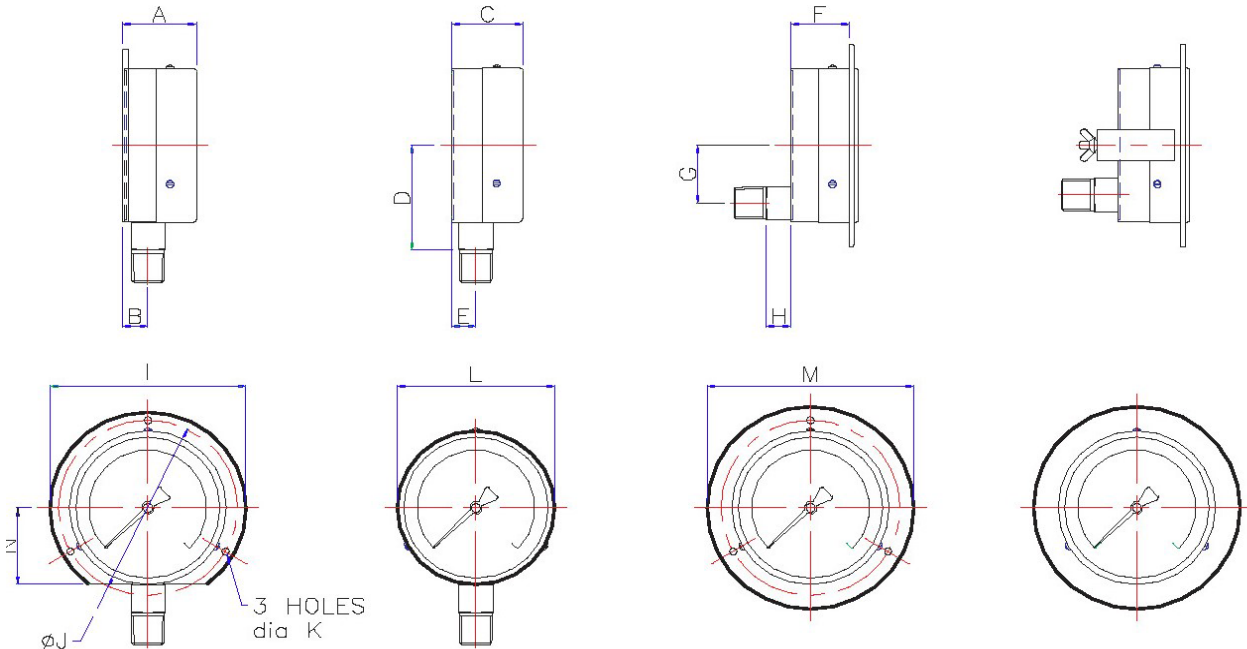
Window Movement Special Scales Restrictors Pointers Case/Bezel Auxillary pointer Accuracy Certification	Perspex, Polycarbonate "Vibragauge" (vibration, pulsation resistant) psi, bar, kg/cm ² , Tons etc. Dual scale, Fineline, colour sectors/ lines, refrigerant 0.4 and 0.9mm bore Adjustable 316 Stainless steel Maximum, Minimum or both 0.5% for 100/150mm, 1% for 63mm N.A.T.A. or Ambit In-House
--	--

DIMENSIONS

Surface Mounted Model - 1121	Direct Mounted (Standard) Model - 1122	Flush Mounted Screw Fixing Model - 1123	Flush Mounted Clamp Fixing Model - 1124
---------------------------------	--	---	---

Bottom connect

Rear connect



Dimensions Diameter	A	B	C	D	E	F	G	H	I	J	K	L	M	N	Panel Cut-out
63	35	11	35	38.5	11	29	21	6	86	75	3.6	65	90	32	70
100	49	18	45	70	17.5	49	32	13	130	118	6	103	135	51	106
150	53	17.5	50	92	18	50	32	13	183	168	6	153	185	75.5	155

Sales of ALL products are subject to our General Conditions of Quotation & Supply.
 Technical specifications are subject to change without prior notice.

AMBIT INSTRUMENTS PTY LTD

ACN No 005 613 641
 42 TITAN DRIVE CARRUM DOWNS 3201 VICTORIA AUSTRALIA.
 Phone: 03.9776.8888 Fax: 03 9776.8656
 Email: contact@ambitinst.com.au
www.ambitinst.com.au



REV 3. 10

NATA ENDORSED CALIBRATION
 CERTIFICATES AVAILABLE



WORLD RECOGNISED
 ACCREDITATION

LAB No 3103