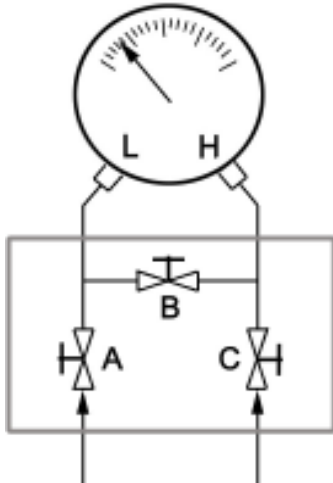


## Notes on Installation / Commissioning of Differential Pressure Gauges

It is necessary to protect differential pressure gauges with either an equalising valve or three valves arranged to give the same protection



Three-Valve Manifold Config.

### PROCEDURE

1. Close all valves
2. Apply line pressure
3. Open valve B
4. Crack open Valves A & C simultaneously
5. Close Valve B

**PRESSURE LIMITS** To avoid permanent damage the gauge must not be pressurised beyond its limits for both differential pressure and line pressure

**MANIFOLD PART Nos.**  
(All 316 Stainless Steel)

PIPE to PIPE:	Model 3VM-8-SSR-R
PIPE to FLANGE:	Model 3VM-8-SSR-T
FLANGE to FLANGE:	Model 3VM-8-SSR-H

**AMBIT Instruments Pty Ltd** 42 Titan Drive Carrum Downs Vic 3201 Ph. 03 9776.8888

29/2 O'Connell St. Parramatta NSW 2150 Phone 9891.1222

[www.ambitinst.com.au](http://www.ambitinst.com.au)