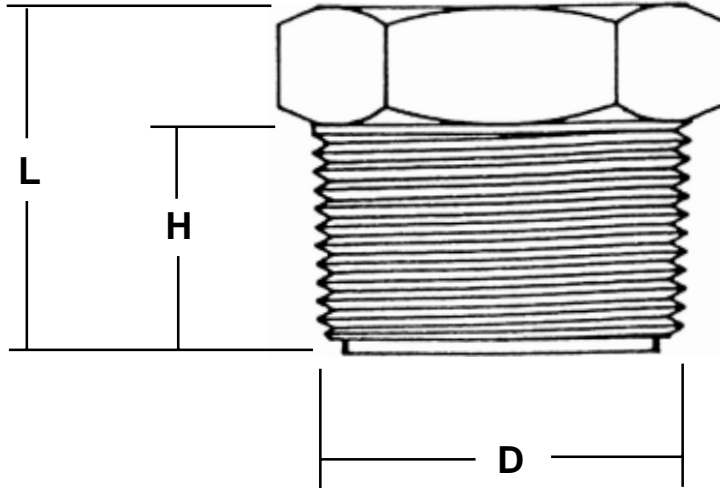


AMBIT DIAPHRAGM SEALS

PLUG TYPE Model/Type: ADS-PS2000



Nominal Plug Size	Instrument Connection	316 S/S Diaphragm	Minimum Pressures*		Dimensions		
			63mm	100 & 150mm	L	H	D
1" (25mm)	3/8" BSPP	27mm dia.	600kPa	1000kPa	39	23	31.5
1 1/4" (32mm)	3/8" BSPP, 1/2"NPT	27mm dia.	600kPa	1000kPa	39.5	24	40
1 1/2" (40mm)	3/8" BSPP, 1/2"NPT	40mm dia.	160kPa	250kPa	43	28.5	47
2" (50mm)	3/8" BSPP, 1/2"NPT	40mm dia	160kPa	250kPa	48	29	59

* For bourdon type pressure gauges - by dial size,

Features

- Easily removed for cleaning
- 316 stainless steel diaphragm and machined plug
- Welded diaphragm
- All welds integrity tested with helium
- Standard "fill" fluid non-toxic silicon oil, Dow Corning 200 Fluid 100CS
- Fitted with a filling plug for correct calibration after vacuum evacuation
- Comprehensive range of other designs to suit all industries
- Designed and manufactured in Australia

AMBIT Instruments Pty Ltd Head Office: 42 Titan Drive Carrum Downs Vic 3201
Phone: 03 9776.8888 **Fax:** 03 9776.8656 **email:** contact@ambitinst.com.au
Website: www.ambitinst.com.au
NSW Office: 29/2 O'Connell St. Parramatta NSW 2150 **Phone:** 02 9891.1222
Fax: 02 9891.1260 **email:** nswsales@ambitinst.com.au

