

# HPEFV SERIES

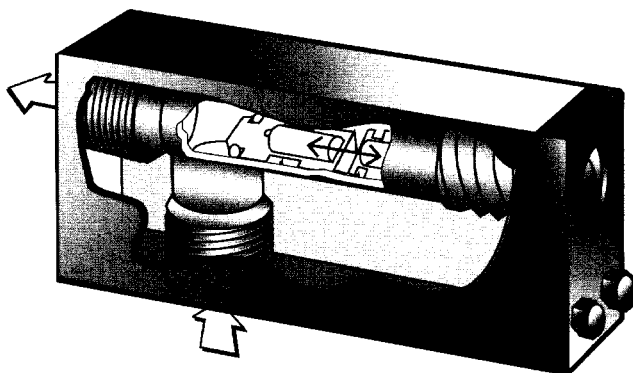
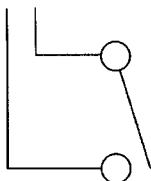
For preventing uncontrolled flows of gases and liquids

## Switch Data SPST

Hermetically Sealed Reed Switch  
 Max. Switching Voltage  
 DC (V) 200  
 AC (V) 150  
 Contact Rating  
 DC (W) 50  
 AC (VA) 70  
 Max. Switching Current  
 DC (A) 1.0  
 AC (A) 0.7

## Leads SPST

leads 18 in. min. from body 22  
 AWG, TFE insulation



Above values for resistive loads only. For inductive loads, surge current and rush current contact protection is required, consult your local representative.

## Specifications

Unit	Max. Working Pressure PSIG (BARG)	Wetted Parts	Seals
316ss	6000 (413.4)	316ss, Epoxy	Viton®

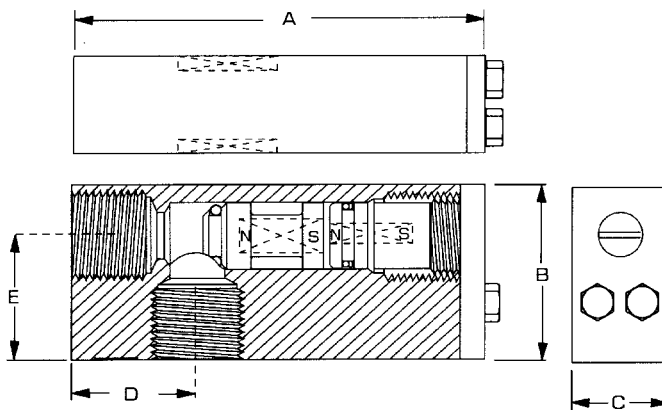
**Fluid Ports:** Inlet/Outlet Ports - See Calibration Ranges

**Temperature Operating Range:**

32 to 220° F (0 to 104° C)

**Installation:**

The 250 series may be mounted in any position. 500 and 750 series can be mounted in any position except with the outlet port down. We suggest the unit be calibrated in the attitude in which it will be installed. An actuation point two to three times the normal flow rate should be chosen to avoid the valve actuating from initial pressurization of the system and normal surges. If flow is kept constant, an actuation point 10% above the normal rate may be used.



Patent No's 4,637,427 • 4,630,799  
 • 4,574,833 • Others may apply

SIZE	WEIGHT Lbs (Kg)	DIMENSIONS Inches (mm)				
		A	B	C	D	E
250	1.47 (0.667)	3.75 (149)	1.50 (38)	1.00 (25)	1.00 (25)	1.00 (25)
500	2.625 (1.190)	4.25 (108)	2.00 (50)	1.25 (32)	1.25 (32)	1.37 (35)
750	3.44 (1.560)	5.25 (133)	2.25 (57)	1.25 (32)	1.625 (41)	1.625 (41)

## How To Order

<b>HPEFV</b>	-	<b>250</b>	<b>S</b>	<b>PSO</b>	<b>ES</b>	<b>OPTIONS</b>
<b>Model</b>		<b>Size</b>	<b>Material</b>	<b>Positive Shut-Off</b>	<b>Electric Switch</b>	Any of the following options may be added.
		250	S 316ss	Blank for Controlled Bleed Model	Normally Open*	O2 Oxygen Cleaned
		500	Other material available on request			HT High Temperature Unit 340°F (171°C)
		750				KZ Kalrez® Seals
						EPR EPR Seals
						Z Special Custom Option
						FP Factory Presetting (State flow rate, medium, and line pressure)
						Welded Fittings*

Note:  
 All dimensions and specifications are subject to change for quality improvement. Not responsible for printing errors.

@Viton - E. I. DuPont & Co.  
 @Teflon - E. I. DuPont & Co.  
 @Kalrez - E. I. DuPont & Co.

**CTE**  
**CHEM TEC**

from AMBIT Instruments Pty Ltd

\*Consult Factory